

KD Reports

High Quality Reporting for Qt Applications

With KD Reports™, you can add high-quality, printable, and exportable reporting to your Qt™ applications. KD Reports accesses your application data and uses a programmer-provided page description in order to generate well designed reports, complete with automated page-breaking for multi-page reports.

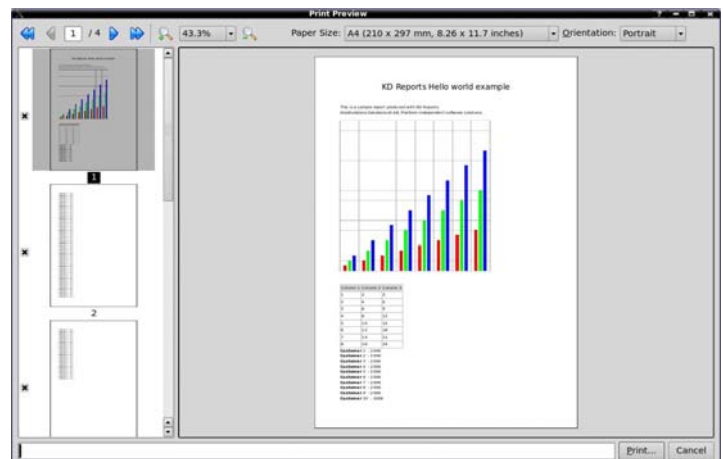
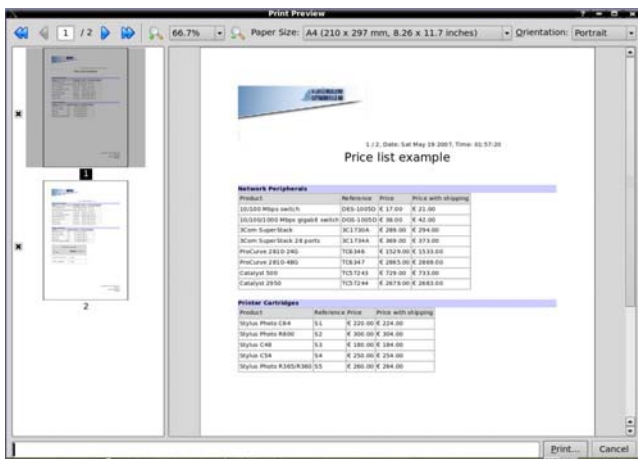
KD Reports supports automatic and custom tables, variable headers and footers, and text and image elements. An easy-to-use built-in layout engine gives you flexibility for arranging your reports in the way that makes sense for you and your organization.

Software engineers using KD Reports will find everything necessary to implement their application's reporting modules. Reports are simply C++ objects that are put together in the application source code. The look and structure of the report can be created as XML, with placeholders that the application fills in at runtime.

Charts can be added to reports by making use of ICS's KD Chart™ package. It provides a wealth of different chart types, as well as great performance—since it is also written in C++. Charts are regular report elements, and can be formatted the same way as any other element.

Key Features

- Easy-to-use C++ API for creating reports based on "elements" added to the report
- Page descriptions in KD Reports can be provided either in C++ or in the form of XML documents
- The created reports can be shown in a KD Reports' preview dialog, and can be saved to PDF files or sent directly to a printer
- Because reports are generated within application logic, applying higher-level calculations is done within the same programming environment as the rest of the application
- Reports may contain text paragraphs, tables, headlines, charts, headers and footers, and more
- Watermarks can be used to add company logos or classification marks to documents



Integrated Computer Solutions Incorporated

54 Middlesex Turnpike • Bedford, MA • 01730
www.ics.com • info@ics.com • 617.621.0060